



November, 2016

ISOE INFORMATION SHEET

JAPANESE DOSIMETRIC RESULTS: FY 2015 DATA AND TRENDS

ISOE Asian Technical Center – NSRA Information Sheet No. 43

This ISOE information sheet presents the occupational exposure data for Fiscal Year (FY) 2015 and trends of commercial reactors in Japan from FY 1996 to FY 2015, which include PWRs, BWRs and a GCR*.

* GCR; Tokai NPP (ceased commercial operation in March 31, 1998)

**Table 1. Total collective dose
in FY 2014 and FY 2015**

Reactor Type	Total Collective Dose (man.Sv)	
	FY 2014	FY 2015
PWRs	5.55	4.50
BWRs	109.19	83.28
Total (LWRs)	114.74	87.78

**Table 2. Average collective dose per reactor
in FY 2014 and FY 2015**

Reactor Type	Average Collective Dose (man.Sv)	
	FY 2014	FY 2015
PWRs	0.23	0.18
BWRs	3.41	2.60
Total (LWRs)	2.01	1.54

Tables 1 and 2 show the total collective dose and the average collective dose per reactor for PWRs, BWRs and LWRs in FY 2014 and FY 2015.

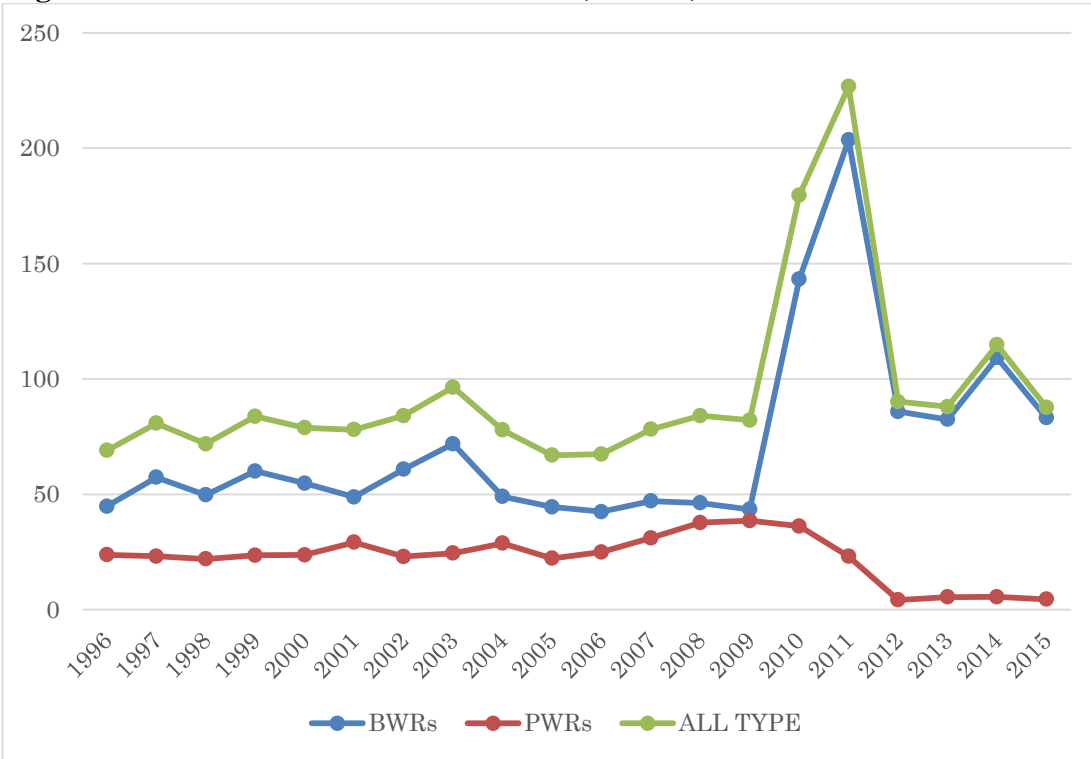
Some NPPs located in the east area of Japan were damaged by the huge earthquake and tsunami on March 11, 2011. Large dose for BWRs in FY 2011 was due to the accident of Fukushima Daiichi NPPs. No plant operated in FY 2014, and only 3 PWRs operated in FY 2015. Figures 1 to 5 show the trends of the total collective dose and the average individual dose etc. from FY 1996 to FY 2015 in Japan.

Please note that these figures include 14 reactors which are in permanent shut down (Ten BWRs, 3 PWRs, and 1 LWCHWR are already permanently shut down).

Exposure data in figures 1 to 5 are based on “Status of Radioactive Waste Management and Occupational Radiation Exposure Management at Nuclear Facilities”.

<http://www.nsra.or.jp/isoe/english/regionalinfo/japan.html>

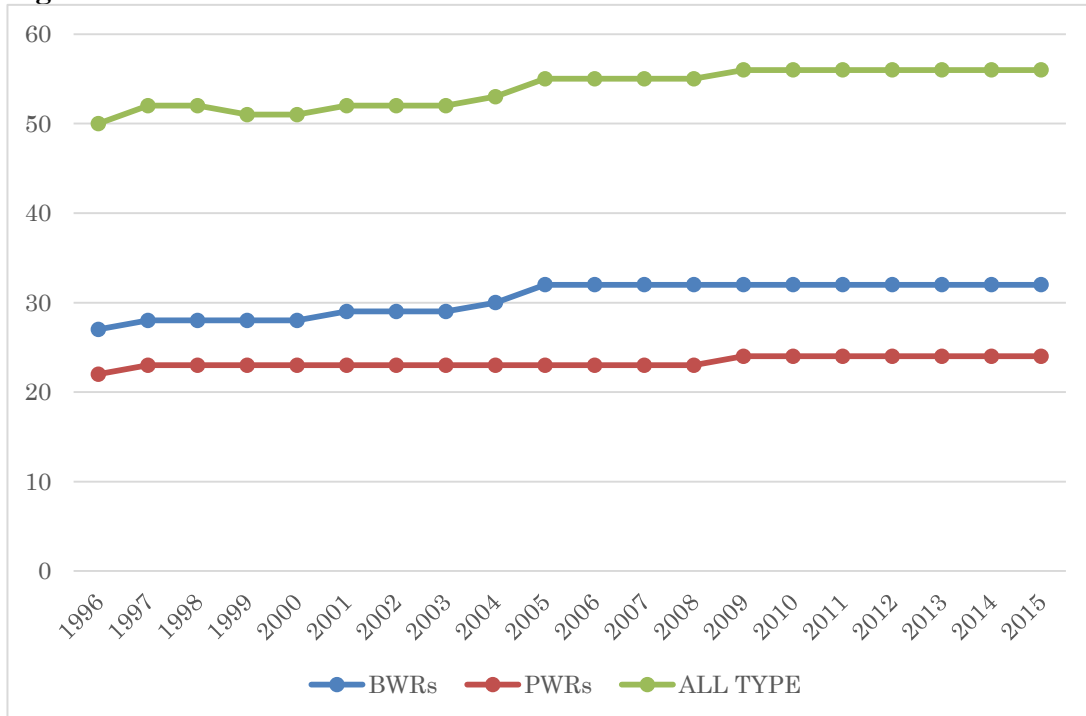
Figure 1: TOTAL COLLECTIVE DOSE (man.Sv)



* GCR is included until FY1998.

** This figure includes 13 reactors which are permanently shut down.

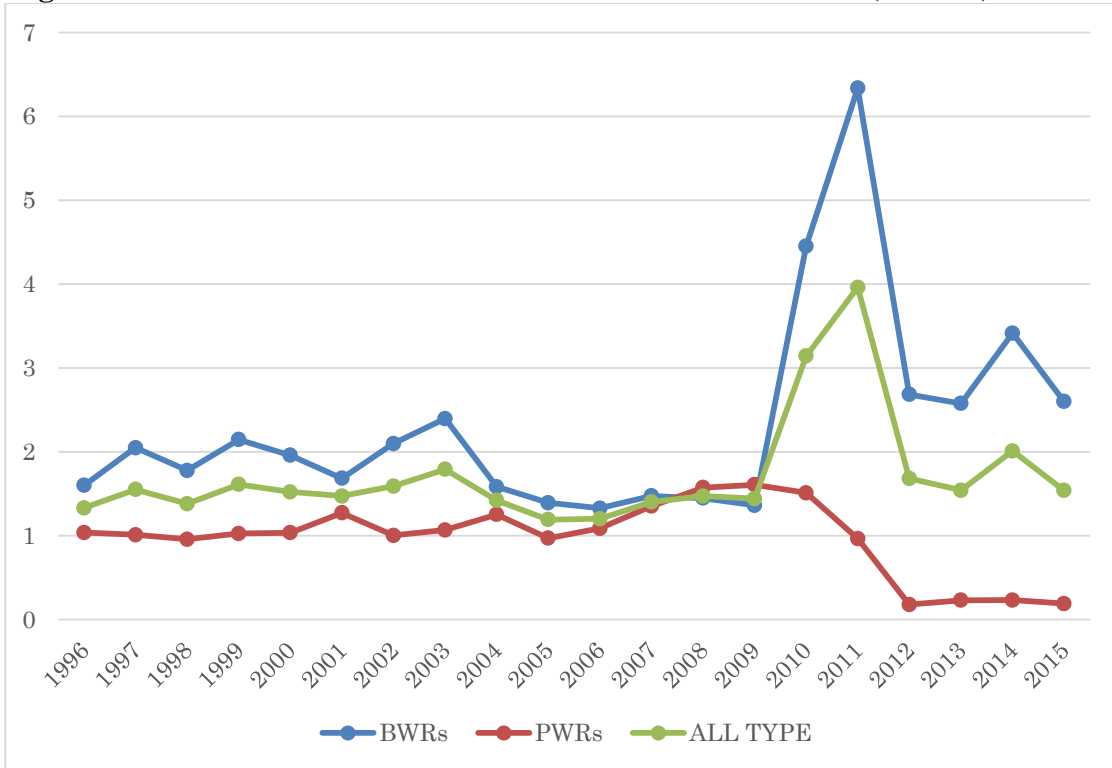
Figure 2: NUMBER OF REACTOR IN JAPAN



* GCR is included until FY1998.

** This figure includes 13 reactors which are permanently shut down.

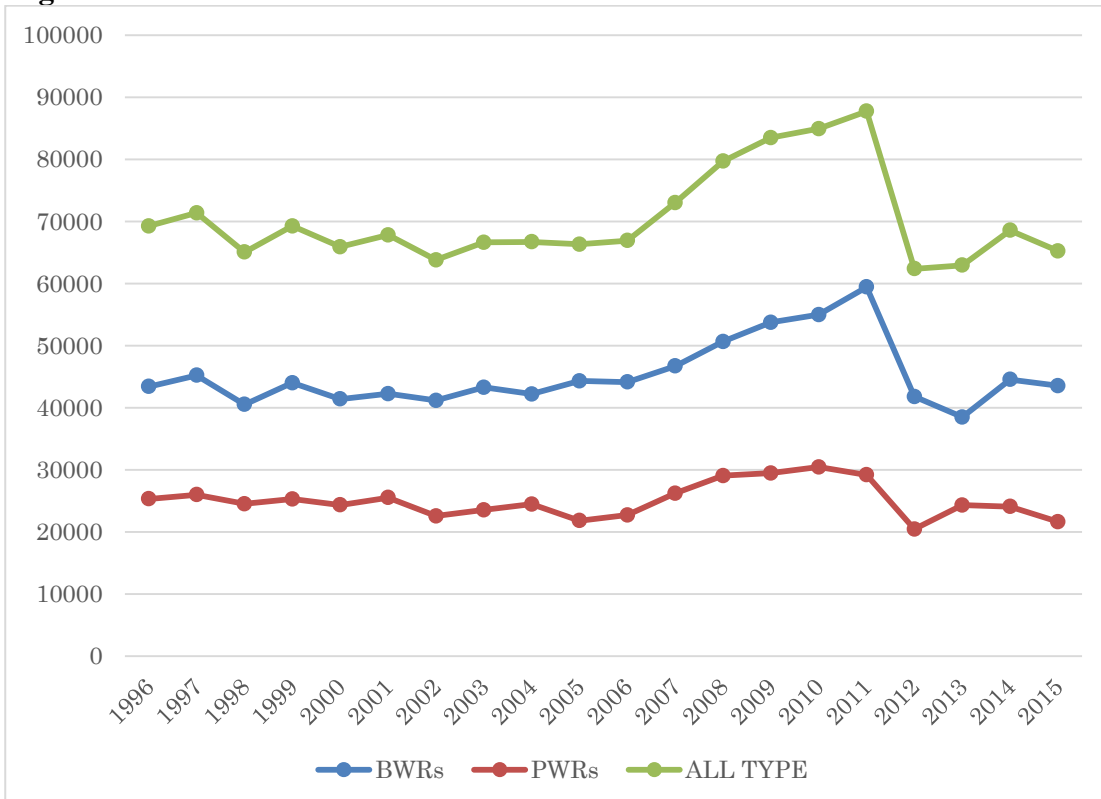
Figure 3: AVERAGE COLLECTIVE DOSE PER REACTOR (man.Sv)



* GCR is included until FY1998.

** This figure includes 13 reactors which are permanently shut down.

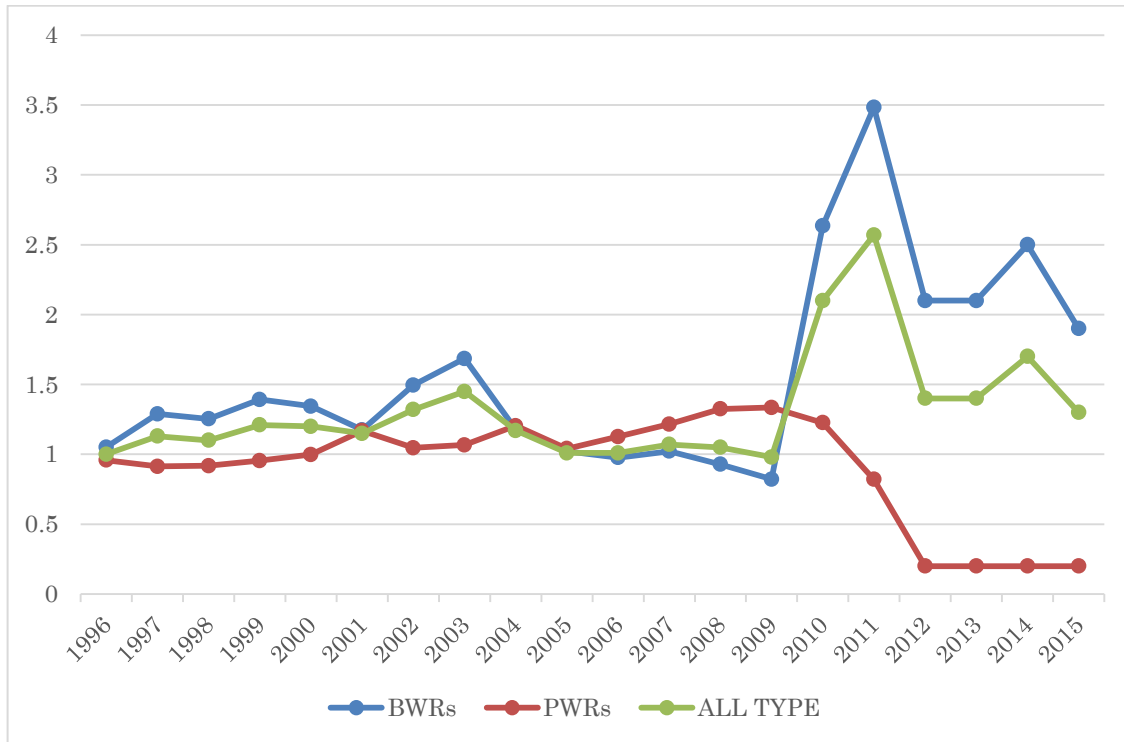
Figure 4: NUMBER OF RADIATION WORKERS



* GCR is included until FY1998.

** This figure includes 13 reactors which are permanently shut down.

Figure 5: AVERAGE INDIVIDUAL DOSE (mSv)



* GCR is included until FY1998.

** This figure includes 13 reactors which are permanently shut down.