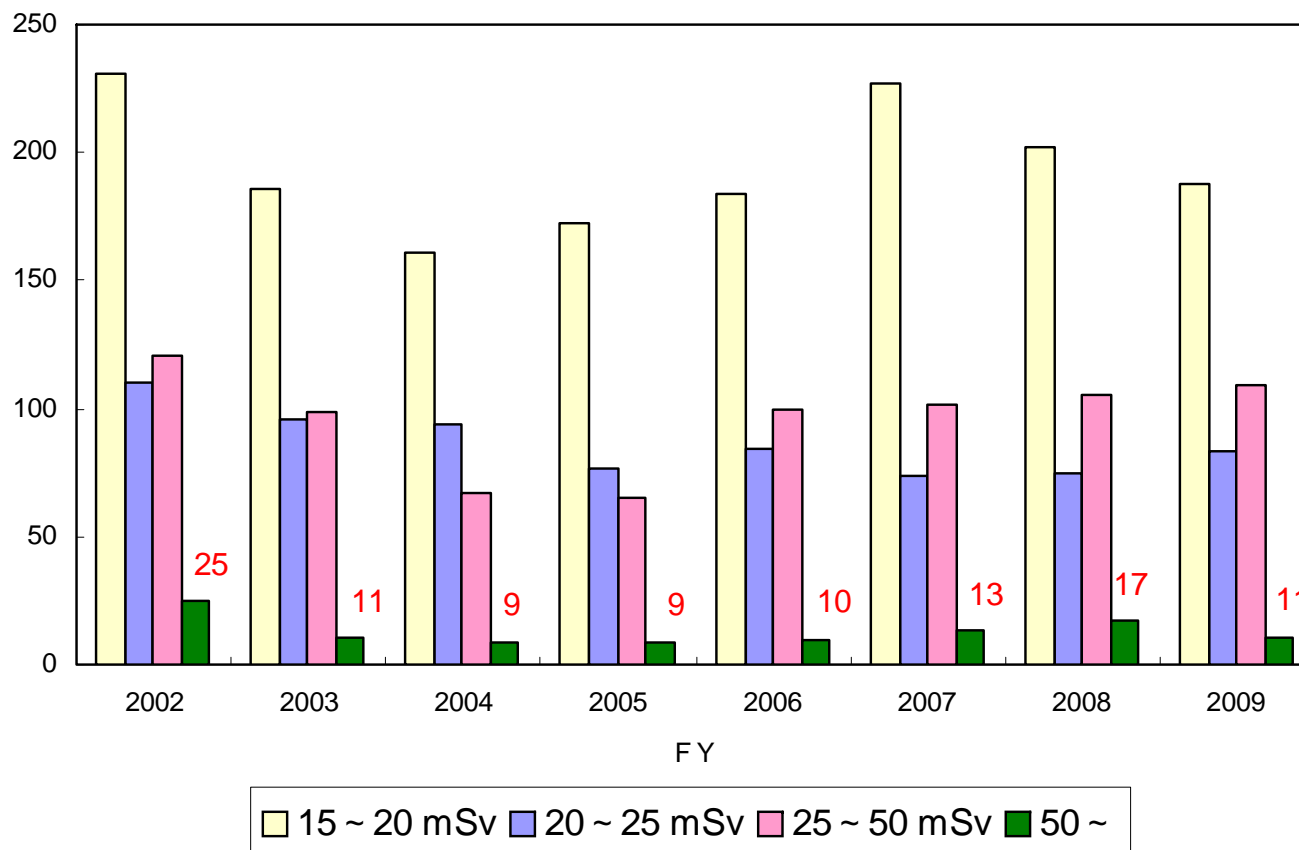


The Number of Persons with Annual Dose Value Greater than 15 mSv of the Personnel Engaged in Radiation Work excepts the Nuclear Facilities in Japan(2010~2013)

(Data Source: Website of Council on Personal Dosimetry Service)

# The Number of Persons with Annual Dose Value Greater than 15 mSv of the Personnel Engaged in Radiation Work\* excepts the Nuclear Facilities in Japan

(Number of persons)



\* incl, Medical Sector, Dental radiology, Veterinarian, General Industry, N.D.T, Research & Education

Data Source: Website of Council on Personal Dosimetry Service