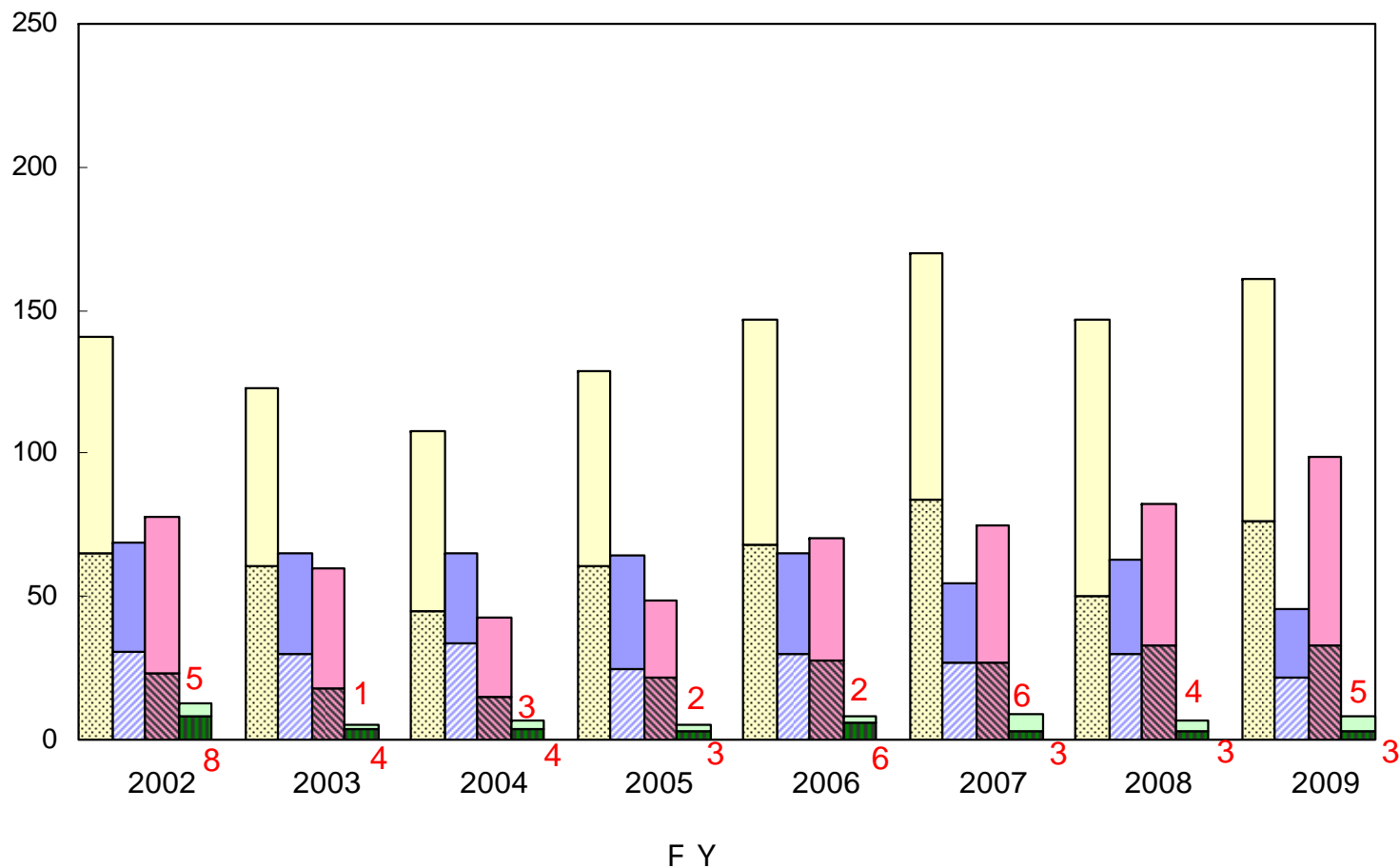


Number of Persons with Annual Dose Value Greater than 15 mSv
of the Doctor and Radiographer in Japan(2010~2013)

(Data Source: Website of Council on Personal Dosimetry Service)

Number of Persons with Annual Dose Value Greater than 15 mSv of the Doctor and Radiographer in Japan

(Number of persons)



Doctor	□ 15 ~ 20 mSv	□ 20 ~ 25 mSv	□ 25 ~ 50 mSv	□ 50 ~
Radiographer	▨ 15 ~ 20 mSv	▨ 20 ~ 25 mSv	▨ 25 ~ 50 mSv	▨ 50 ~

Data Source: Website of Council on Personal Dosimetry Service